



## APPLICATIONS

The new EM BoxPC is the perfect Plug&Play system solution, specially designed for FANLESS applications.

- ▶ Industrial Control and Automation
- ▶ Measurement and Control
- ▶ Medical
- ▶ Infotainment

# ICP-BoxPC-12



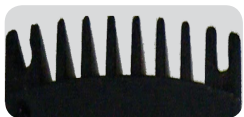
## ICP-BOXPC-12

### FEATURES

- ▶ Powered by the newest technology with support for Single and Dual Core Intel® Atom™ Processors up to 1,6 GHz
- ▶ Intel® 82801HM I/O Controller
- ▶ Allows simultaneous use of UMTS and WLAN for extended router applications
- ▶ Two PCI-Express Mini Card connectors; one prepared for modem solutions with SIM card reader
- ▶ On Board High Definition Audio Interface
- ▶ Supports up to 2GB DDR2 Memory
- ▶ Design, Production and Support "Made in Germany"

### BENEFITS

- ▶ Low emission, high immunity
- ▶ Long term availability
- ▶ Free of rotating parts
- ▶ Full software compatibility
- ▶ Rugged & reliable choice for demanding embedded applications
- ▶ Small installation depth
- ▶ Integration- and application-services, trainings



## OVERVIEW

The EM BoxPC is powered by latest technology, including Intel® Atom™ Processors up to 1,6 GHz and the Intel® 82801HM I/O Controller. An optional wireless module supporting GPRS, EDGE, UMTS and HSDPA is available and at the same time a optional Wireless LAN module can be used.

## SPECIFICATION SUMMARY

- ▶ Fanless operation
- ▶ Gigabit Ethernet Port
- ▶ SATA Interfacing
- ▶ Two PCI-Express Mini-Card Connectors
- ▶ Modem solution with SIM card reader

## SPECIFICATIONS

### CPU

Intel® Atom™ Single and Dual Core Processors up to 1,6 GHz  
 Single Core  
 Intel® Atom™ processor D410  
 1.66 GHz - 512 KB cache  
 Dual Core  
 Intel® Atom™ processor D510  
 1.66 GHz - 1 MB cache

### CHIPSET

Intel® 82801HM I/O Controller

### MAX. MEMORY

Up to 2GB DDR2 RAM with 667 Mhz support

### BIOS

UEFI-BIOS

### SERIAL ATA INTERFACE

2x Internal SATA Connector

### 1 GBIT ETHERNET

Yes

### WLAN

Yes, 802.11 b/g (Option)

### WIRELESS

Yes, GPRS/EDGE/UMTS/HSDPA module (Option)

### PCI EXPRESS® MINI CARD

Yes, 2x Mini Card sockets (one prepared for modem solution with internal SIM Card Reader)

### USB HOST PORTS

4x USB 2.0 Host Ports Type A

### SERIAL PORT

Yes, 2x 9-pin male D-SUB Connector

### ANALOG VGA PORT

Yes

### HARDDISK

Automotive or standard grade harddisk (Option) or industrial flash disks (Option)

### ADDITIONAL OPTIONS

High Definition Audio Headphone  
 2x RS-422  
 2x CAN bus  
 1x External SIM Card Reader

### FANLESS

Designed for fanless operation

### MONITORING AND MANAGEMENT

Hardware Monitoring and Watchdog

### POWER INPUT

8V-24V DC/5A (optional 8V-32V DC)  
 230V AC (Option) others on request

### EMI SHIELDING

Yes CE, other upon request

### SIZE

DC variant:  
 235 mm x 150 mm x 44 mm (L x W x H)  
 1U Rackmount Height  
 AC variant:  
 235 mm x 230 mm x 44 mm  
 1U Rackmount Height

### MOUNTING

Stand alone, Top Hat Rail Mounting, 19" 1U Rackmount Kit, others on request

### TEMPERATURE RANGE

FANLESS Operation: 0°C to +50°C ambient  
 Other temperature ranges upon request

Storage:  
 -40°C to +85°C ambient

### HUMIDITY

Max. rel. humidity of atmosphere non condensing  
 Working up to 75%  
 Storage up to 95%

