



APPLICATIONS

The new EM BoxPC is the perfect Plug&Play system solution, specially designed for FANLESS applications.

- ▶ Industrial Control and Automation
- ▶ Measurement and Control
- ▶ Medical
- ▶ Infotainment

ICP-BoxPC-75DH



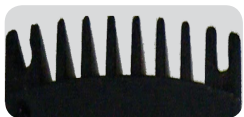
ICP-BOXPC-75DH

FEATURES

- ▶ Powered by latest technology with support for Intel® Core™ 2 Duo Processor up to 1.86 GHz
- ▶ Mobile Intel® GS45 Express Chipset
- ▶ Four Gigabit Ethernet Ports
- ▶ Eight USB Ports, 4 COM Ports, one Mini PCI™ socket and optional two CAN Bus Ports
- ▶ One DVI-I, two DisplayPort and one TV OUT
- ▶ Two PCI-Express Mini Card connectors; one prepared for modem solutions with SIM card socket and one ready for flash memory card
- ▶ Supports up to 8GB DDR3 memory
- ▶ Design, Production and Support “Made in Germany”

BENEFITS

- ▶ Low emission, high immunity
- ▶ Long term availability
- ▶ Free of rotating parts
- ▶ Full software compatibility
- ▶ Rugged & reliable choice for demanding embedded applications
- ▶ Small installation depth
- ▶ Integration- and application-services, trainings



OVERVIEW

The EM BoxPC is powered by latest technology, including Intel® Core™ 2 Duo Processor up to 1,86 GHz and the Mobile Intel® GS45 Express Chipset. The perfect Plug&Play system solution optional automotive or standard grade harddisks, wireless module supporting GPRS, EDGE, UMTS and HD-SPA is also available.

SPECIFICATION SUMMARY

- ▶ Full PC functionality
- ▶ Four Gigabit Ethernet Port
- ▶ SATA Interfacing
- ▶ Two PCI-Express Mini-Card Connectors
- ▶ Modem solution with SIM card socket

SPECIFICATIONS

CPU

Intel® Core™ 2 Duo - SL9400 - 1.86 GHz - FSB 1066 MHz - 6 MB L2 Cache
 Intel® Core™ 2 Duo - SU9300 - 1.2 GHz - FSB 800 MHz - 3 MB L2 Cache
 Intel® Celeron® M - C722 - 1.2 GHz - FSB 800 MHz - 1 MB L2 Cache

CHIPSET

Mobile Intel® GS45 Express Chipset with Intel® ICH9M

SYSTEM MEMORY

Up to 8 GB DDR3 memory

SERIAL ATA INTERFACE

3x internal

EXTERNAL SERIAL ATA

1x eSATA

GIGABIT ETHERNET

Yes, 4 Gigabit Ethernet Ports

WLAN

Yes, IEEE 802.11b/g (Option)

WIRELESS

Yes, GPRS/EDGE/UMTS/HSDPA module (Option)

USB 2.0 PORTS

8x Type A

COM PORTS

2x RS-232 Ports
 2x RS-422 Ports
 2x CAN Bus Ports (Option)

PARALLEL PORT

Yes (Option)

MINI PCI™ SOCKET

Yes

DVI-I

Yes (Analog VGA and Digital Video Interface)

DISPLAYPORTS

2x DisplayPorts

TV OUT

1x TV OUT

SOUND

On board 4-channel High Definition Audio Interface (Option)

HEALTH MONITORING AND MANAGEMENT

Hardware Monitoring and Watchdog

HARDDISK

Automotive or standard grade harddisks (Option) or industrial flash disks (Option)

POWER INPUT

8V-24V DC/5A (optional 8V-32V DC)
 230V AC (Option)
 Others on request

EMI SHIELDING

Yes CE, other upon request

FANLESS

Designed for fanless operation

SIZE

DC variant:
 235 mm × 150 mm × 71 mm (L × W × H)
 2U Rackmount Height
 AC variant:
 235 mm × 230 mm × 71 mm
 2U Rackmount Height

MOUNTING

Stand alone, Top Hat Rail Mounting, 19" 2U Rackmount Kit, others on request

TEMPERATURE RANGE

FANLESS Operation:
 0°C to +50°C ambient
 extended temperature ranges upon request

Storage:
 -40°C to +85°C ambient

HUMIDITY

Max. rel. humidity of atmosphere
 non condensing
 Working up to 75%
 Storage up to 95%

