



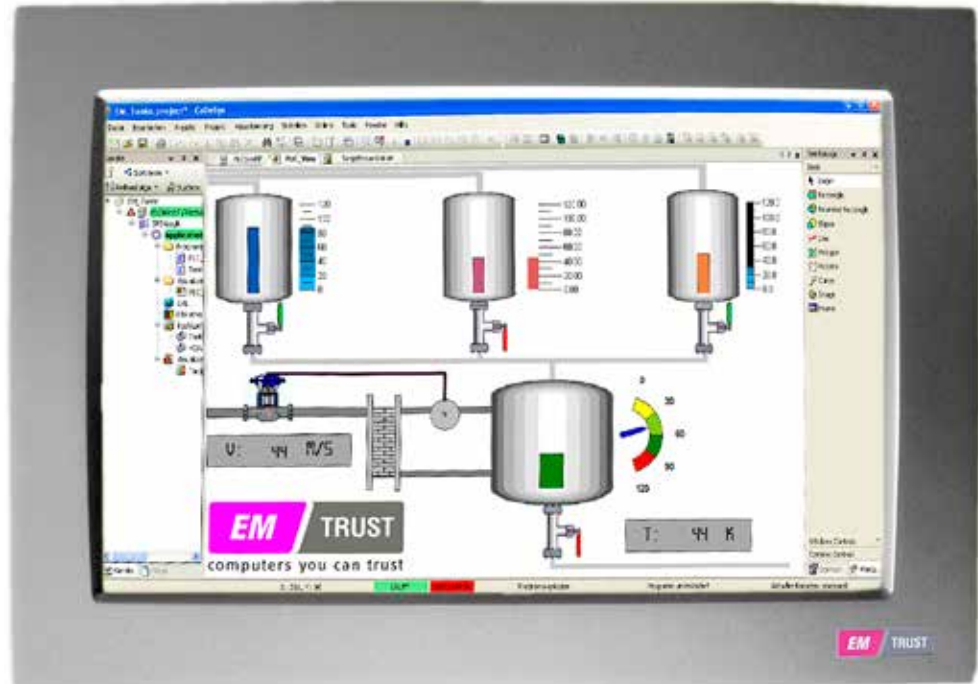
APPLICATIONS

The new EM Vision Panel PC is the perfect Plug&Play system solution, especially designed for FANLESS applications. The complete EMI-shielding is already implemented.

- ▶ Industrial Control and Automation
- ▶ Measurement & Control
- ▶ Medical
- ▶ Infotainment
- ▶ Point of Sale
- ▶ Human-Machine-Interface

PPC-18-85

 FRONT
SIDE
IP65



PPC-18-85

FEATURES

- ▶ 18.5" TFT-Display (WXGA 1366 × 786 Pixel)
- ▶ Front IP65 protection
- ▶ Powered by the newest technology with support for Intel® Core™ I7 Processors up to 1.33 GHz
- ▶ Mobile Intel® QM57 Express Chipset
- ▶ Allows simultaneous use of UMTS and WLAN for extended router applications
- ▶ Supports up to 8GB DDR3 Memory
- ▶ Design, Production and Support "Made in Germany"

BENEFITS

- ▶ Long term availability
- ▶ Free of rotating parts
- ▶ Integrated Touch-Controller
- ▶ Full software compatibility
- ▶ Rugged & reliable choice for demanding embedded applications
- ▶ Small installation depth
- ▶ High brightness
- ▶ Integration- and application-services, trainings
- ▶ Low emission, high immunity
- ▶ CE





PPC-18-85

EM Vision

OVERVIEW

The EM Vision Panel PC is powered by the latest technology, including the Intel® Core™ I7 Processors up to 1.33 GHz and the Mobile Intel® QM57 Express Chipset. The perfect Plug&Play system solution offers a wide range of TFT display sizes and optional hard disk. An optional wireless module supporting GPRS, EDGE, UMTS and HSDPA is available and at the same time an optional Wireless LAN module can be used.

SPECIFICATION SUMMARY

- ▶ Fanless operation
- ▶ Gigabit Ethernet Port
- ▶ SATA Interfacing
- ▶ Integrated Touch controller
- ▶ UMTS modem solution with SIM card reader
- ▶ Dual Independent Display

SPECIFICATIONS

TFT-DISPLAY

18.5" TFT-Display
WXGA 1366 x 768 Pixel
Brightness: 300 cd/m²
LED Backlight

CPU

Intel® Core™ I7 Processor 660UE
1.33 GHz - 18W TDPmax
4 MB cache

CHIPSET

Mobile Intel® QM57 Express Chipset

MAX. MEMORY

Up to 8GB DDR3 RAM with 800 MHz support

BIOS

UEFI-BIOS

SERIAL ATA INTERFACE

2x Internal SATA Connectors

1 GBIT ETHERNET

3x GBit Ethernet
1x Intel® 82577 GBit Eth. Contr.
2x Intel® 82574 GBit Eth. Contr.

WLAN

802.11 b/g (Option)

WIRELESS

GPRS/EDGE/UMTS/HSDPA module (option)

USB HOST PORTS

2x USB 3.0 Host Ports
3x USB 2.0 Host Ports /Type A

SERIAL PORT

1x RS232 9-pin male D-SUB Connector

GRAPHIC PORT

DVI-I

TOUCH CONTROLLER

Resistive Touch 4-wire

HARD DISK

Automotive or standard grade hard disk (option) or industrial flash disk (option)

ADDITIONAL OPTIONS

2x RS-422/485 Connectors
1x CAN Bus Connector
1x SIM Card Reader

FANLESS

Designed for fanless operation

MANAGEMENT

Hardware Monitoring and Watchdog

POWER INPUT

DC: 8V (min) to 32V (max)

EMI SHIELDING

CE, other on request

PROTECTION

Front side IP65

TEMPERATURE RANGE

FANLESS Operation:
0°C to +40°C ambient
Other temperature ranges upon request

Storage:
-20°C to +60°C ambient

HUMIDITY

Maximum relative humidity of atmosphere non condensing
Working up to 75%
Storage up to 95%.

DIMENSION

Approximately (L x W x H)
493 mm x 313 mm x 70 mm

MASS

Approximately 5600 grams